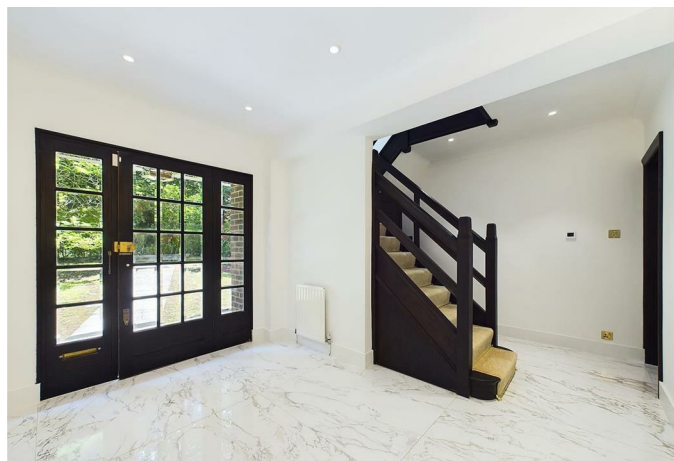




Mount Park Road, Harrow, HA1 3JU

A stunning four bedroom, three bathroom detached house within the exclusive Mount Park Estate, Harrow On The Hill. This most desirable property is located moments from a fantastic range of shops, restaurants and cafés, while the open spaces of Roxborough Park are also within easy reach. Local transport links are available nearby from Harrow-on-the-Hill Station (Metropolitan and National Rail).





92 High Street, Ruislip, Middlesex, HA4 8LS

T: 01895 625999

lettings@gibsonhoney.co.uk

www.gibsonhoney.co.uk



Energy Efficiency Rating		
	Current	Potential
Very energy efficient - lower running costs		
(92 plus) A		
(81-91) B		
(69-80) C		
(55-68) D		
(39-54) E		
(21-38) F		
(1-20) G		
Not energy efficient - higher running costs		
England & Wales		EU Directive 2002/91/EC



You may download, store and use the material for your own personal use and research. You may not republish, retransmit, redistribute or otherwise make the material available to any party or make the same available on any website. These particulars, whilst believed to be accurate are set out as a general outline only for guidance and do not constitute any part of an offer or contract. Intending purchasers should not rely on them as statements or representation of fact, but must satisfy themselves by inspection or otherwise as to their accuracy. No person in this firms employment has the authority to make or give any representation or warranty in respect of the property.